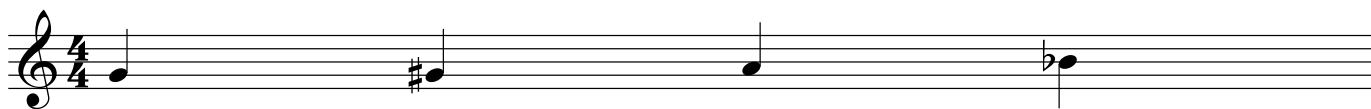
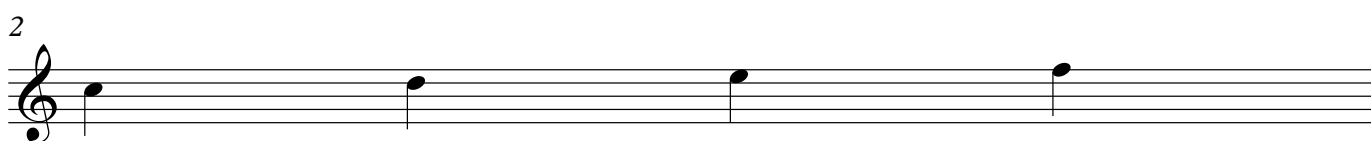


Clarinet Tuning Tendencies

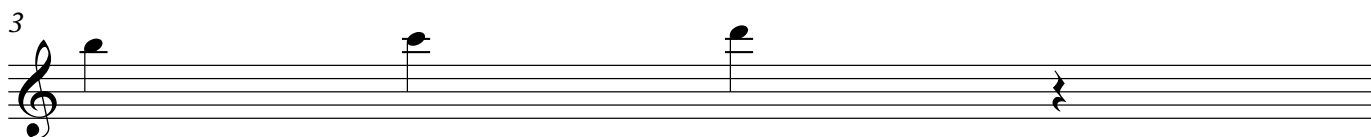
Every clarinet responds a bit differently. However, these are some intonation tendencies that many clarinets share. There is a video to accompany this worksheet at: <http://youtu.be/UJoedGEF2YI>.



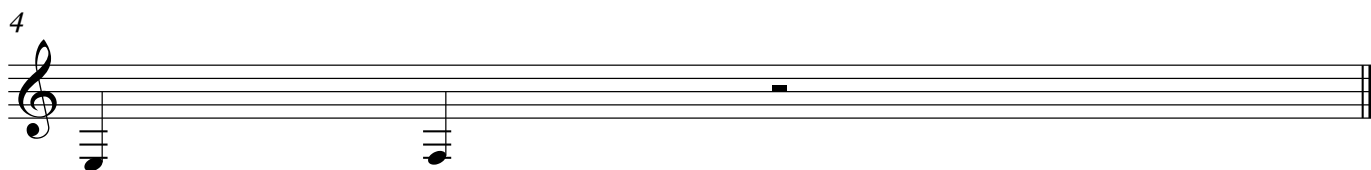
The "throat tones" tend to play quite sharp. Adding resonator fingers (see <http://youtu.be/MDp6VDUgOOU>) may help to bring the pitch down a bit.



On many clarinets, these higher notes tend to be a bit sharper than the octave below. You can tune these notes by pulling out your middle joint, or even your bell.



These high notes often play a bit sharp as well. However, if you find that they play flat, it can be an indication that your tongue is not in the proper playing position, which can affect pitch quite a bit.



These lowest notes tend to play quite flat on most clarinets. You can try and bring the pitch up using faster air speed and a strong embouchure.

2014 - Clarinet Mentors (www.learnclarinetnow.com)

Free video clarinet lessons samples at:

<http://www.clarinetcommunity.com/sq/27377-clarinet-is-easy-free-preview-videos>